

# *GPS-503 GPS Mobile Phone for Old People User's Manual*



This picture is only for reference. Only black color is available now

## GPS-503 (GPS Tracker + Mobile Phone)

### GPS Tracker for Old People with 2 way communication

#### **Function**

1. GSM Quad-band GPS Mobile phone tracker
2. 1.7 inch B/W TFT Screen display
3. Support 3 relative contacts and 6 fast-dial phones for energy help.
4. Support SOS Emergency calling.
5. Smart keyboard locker makes it easy to lock/unlock
6. Automatic voical time clock; best for old people to know time anytime
7. Flash torch function for old people to go to toilet in the night.
8. FM radio function to fullfill old people's entertainment life.
9. GPS Location and tracking to secure old people outside activities
10. Super-big letters display
11. Voical keypad and easy operation to avoid wrong number
12. Long time standby (7days) to avoid old people to forget charging.
13. Super loud speaker with stereo, better for poor-hearing old people.
14. To get old people's location by SMS and internet.

## Hardware specification

GSM Band: 850/900/1800/1900MHZ

LCD: 1.7" White/black

GPS: SiRF Star III

GPS Channel: 20 channels.

Tracking sensitivity: -159 dBm

Capture sensitivity: -144dBm

Locating time: Hot start: <2 sec (open air)

Warm start: <15 sec

Cold start: <38 sec

Battery: 3.7V DC, 1400mAh

Flash torch: 1 internal LED light

Standby time: 7 days

Max communication time: 4 hours

Accuracy of GPS Location:

300 meters (LBS) 5-10 meters (GPS)

Antenna: Built-in Quad band GSM antenna and High-gain GPS Antenna

Side-button: Volume (+/-) Keypad (ON/OFF) Flash torch (ON/OFF)

FM(ON/OFF)

FM Radio: Built-in Antenna, support non-earphone play

Phone size: 115 mm(Long) \* 51mm(Wide) \* 16.5mm (High)

## Application

- Mobile phone for make phone calls
- Consumer electronics: This is GPS Mobile phone
- Anti-hijacking: it looks like a normal mobile phone but the holder's trace is in the monitored
- Nursing Home: prevent old people from losing
- Criminal Investigation: Remote locating and tracking criminal
- Case evidence: to monitor conversation silently & remotely.

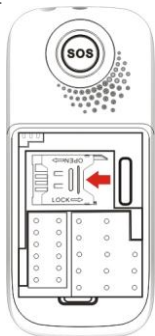


**Color options: Black color available only at present. We can make white color for your quantity order.**

NOTE: We may give black color or white color according to our stock. So please contact us before you buy.

## Appearance & Function

How to put SIM Card inside

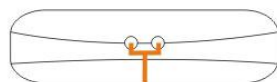


How to put battery



Flash torch

Earphone



Car charger



SOS

Menu

1 Phonebook

PhoneBook>Add New Contact>

First, tap Phonebook and then tap OK and you can see

- View Record
- Search contact
- Add new contact

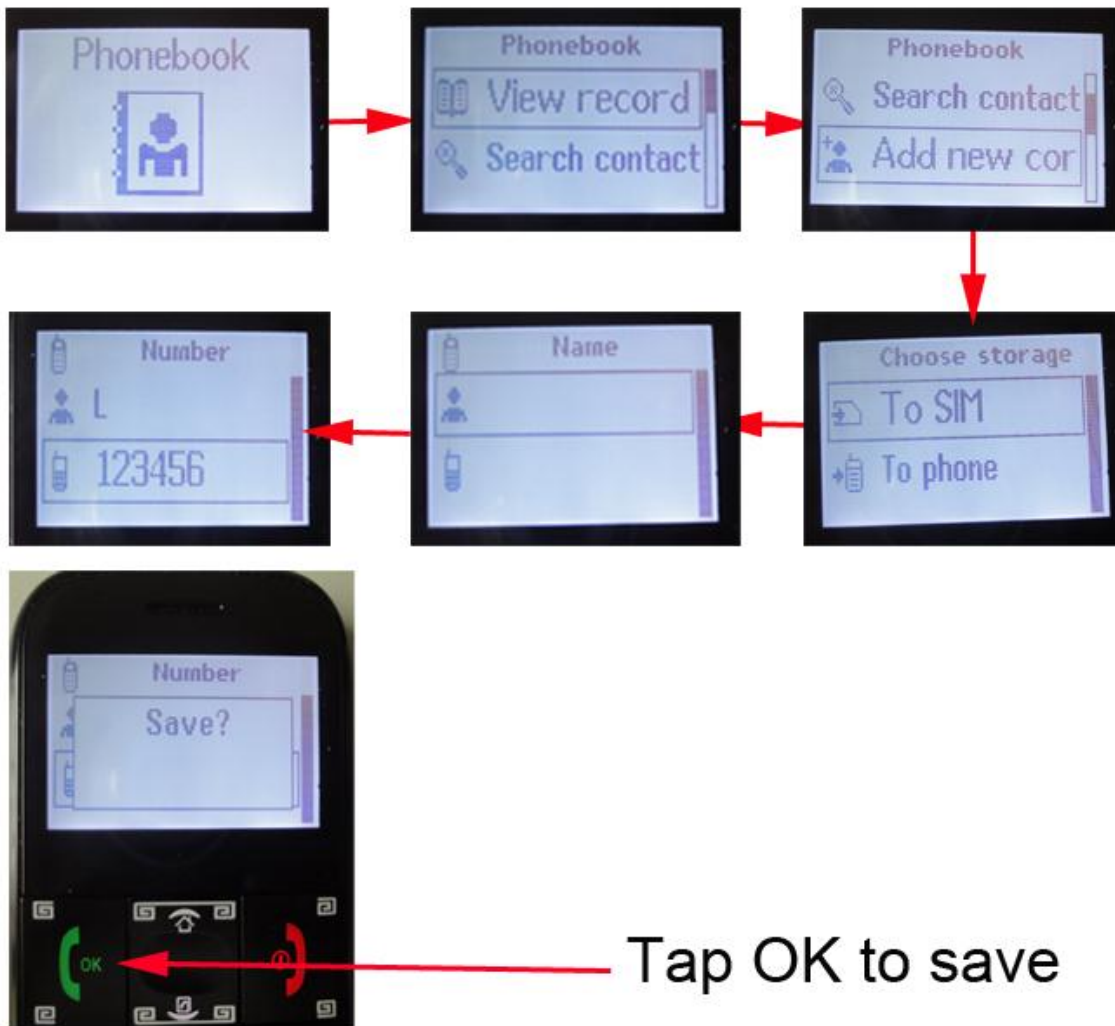
You need to choose Add New contact and press OK again, and you can see

- To SIM
- To Phone

You can choose any of them and then tap OK, and you can Name & Phone number

Go to name and press OK, and you need to input name and phone numbers. You need to choose INPUT Method: ENG, eng,ABC, abc, 123 and chinese input. After that, you need to tap END button and you can see SAVE? Choose OK to save it. See below picture:

## How to add new contacts



2 SOS

3 Shortcut

To set 9 fast dial phone numbers. 3 family calls and 6 special phone calls. User can customize it as their needs.

#### 4 Messages

#### 5 Call history

- Missed calls
- Dialed Calls
- Received calls
- Delete logs

#### 6 Settings

##### a) Phone Setup

- Date and Time
  - i. Time zone Settings
    - Set time
    - Set date
  - ii. Time format Settings
- Language
  - English
  - Simplified Chinese
- Input Method
- LCD Backlight
- LCD Contrast
- Scheduled Power On/off
- Customize
- Restore factory Settings

#### 7 FM

You can tap FM to use FM radio function. Put arrow button to change your favorite channel.

## Monitor & SOS& Fast dial

### Monitor sound (Audio monitoring)

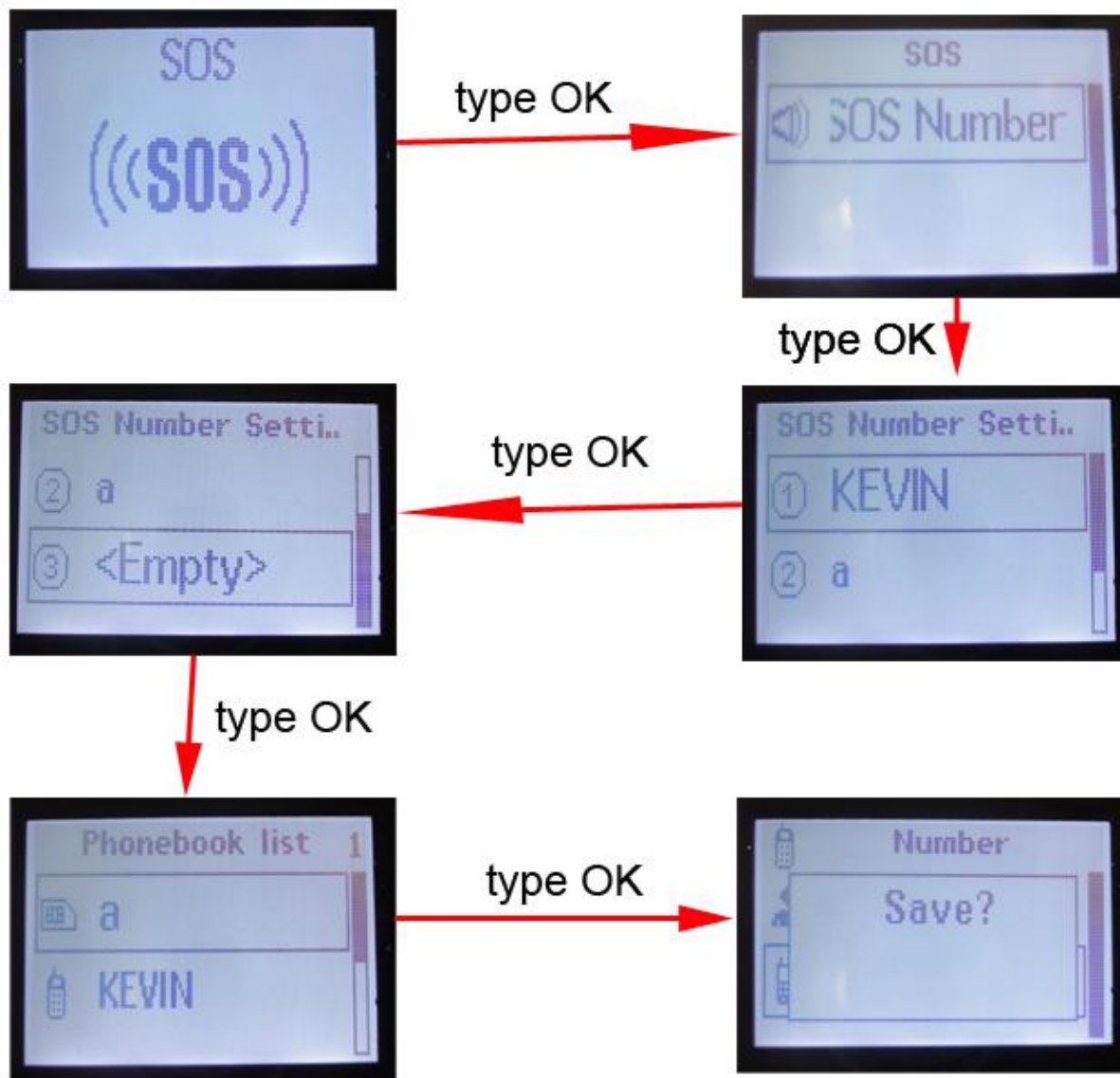
Only SOS users can do audio monitoring by sending SMS command: MONITOR#

When GPS503 receive the SMS command, it will reply OK and dial silently your phone and you can answer it and hear the sound near the phone.

### How to set SOS users?

You can set 3 contacts as SOS users (receiver). In the menu, you can see SOS icon, please tap it as below:

**SOS>SOS Number Settings> Import from PhoneBook.** For more details, please see picture:



### Fast dial

- Family Number Settings: 1,2, and 3 are for Family member
- Shortcut list: 4,5, 6, 7,8 and 9 are for fast dial

When they are set, you can keep pressing 1 button to fast dial a relative or doctor.

### GPS TRACKING

#### Star GPS Tracking


1. It starts to enable GPS Tracking function and search satellite when powered on.

Its GPS Icon is flashing and finally stop flashing when it finds GPS signal and then send to server. After 20 seconds, it will disable GPS function to save energy.

2. If it can not find GPS signals within 5 mins, it wil close GPS function and enable GPS every 30 seconds and upload its GPS position info to server.

### 3. How to activate its GPS function?

- **Activate it trough Online GPS Tracking platform**

You can tap  and the software will send command to GPS-503 phone to enable its GPS.

- **Activate GPS via SMS Commands**

The 1st SMS Command: **DW**

When you send this command to device, it will reply you with a LBS location (street name):  
UVI Group, Huijing Garden, No.11, Kexing Road, High-tech park, Nanshan Distr., Shenzhen, Guangdong, China

The 2<sup>nd</sup> SMS Command: **WHERE#**

This SMS command to get lat.and long.

You will get SMS with location as below:

**Lat: N22.541005, Lon: E113.951553, Course: 99.43,**

**Speed: 1.9816, Date time: 10-11-04 10:19:53**

The 3<sup>rd</sup> SMS command: **URL#** (To request a link for GPS location with google map)

For example:

**<Date Time: 10-11-10 10:30:18>**

[Http://maps.google.com/maps?q=N22.541228, E113.9651407](http://maps.google.com/maps?q=N22.541228, E113.9651407)

NOTE: GPS only can work outside (in an open air). You cannot get GPS signals if the device is indoor, under trees or GPS signal is weak. But LBS can work anywhere with GSM signal.

Get this device's Location through UVI GPS Web tracking platform

When the device is opened, it will send data (Alarm, GPS location info) to our server via GPRS.

See <http://en.coomix.net>

You need to login with your device's IMEI and password. The IMEI can be found inside phone and also in the sticker attached on the gift box. The default password is 666666

For more details, please contact our sales staff.

LBS's accuracy is 50M to 300M. But GPS is 10 meter error.

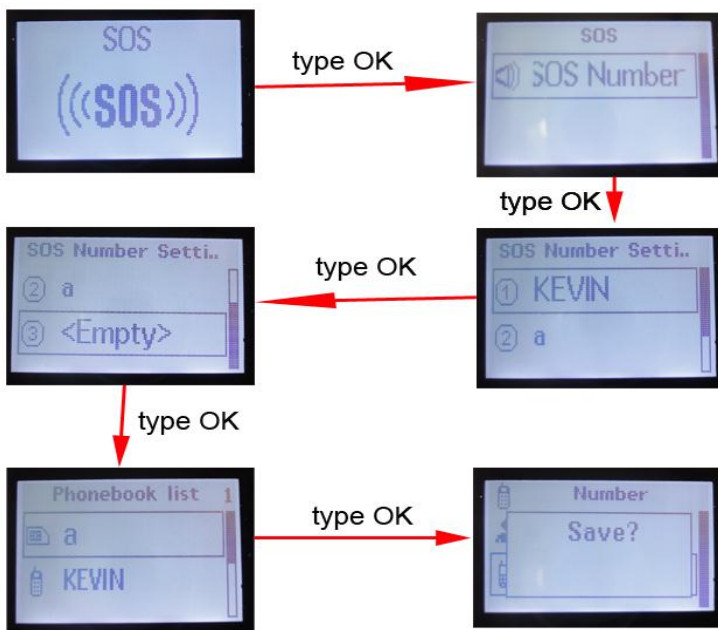
Note: LBS may not work in some countries. Please consult your local GSM provider before you want to use this function.

### SMS COMMAND LIST

ITEM	Function	Example
GPS POSITION	To get Street name (address)	<b>DW</b> When you send <b>DW</b> , you can get location as below: Near Huijing Garden, High-tech Park, Nanshan distr., Shenzhen, Guangdong, China If GPS is fix, it will send you a location with text address with GPS location
	To get latitude & longitude	<b>WHERE#</b> You can get GPS coordinates like: Lat: N22.541005, Lon: E113.951553, Course: 99143, Speed: 1.9816, Date time: 10-11-04 10:19:53
	To get a link to Google map	<b>URL#</b> <a href="http://maps.google.com/maps?q=N22.541228, E113.9651407">Http://maps.google.com/maps?q=N22.541228, E113.9651407</a>
Audio monitoring		<b>MONITOR#</b> When device gets this SMS Command, it will call the sender immediately.

### Fast guide to use GPS-503

1. Insert SIM Card and put battery to power it on
2. Add contacts in Phonebook  
Go to Phonebook to add contacts that you are going to set SOS receivers, family users and fast dial users.
3. Set SOS (this is required)



4. Set Family users and fast dial users. (not required)